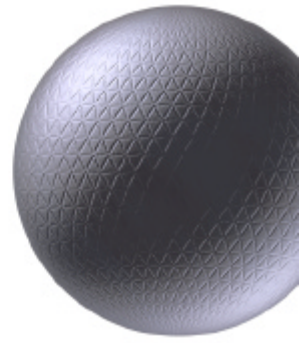


# SYNEXSYS<sup>®</sup>

DATA CONCEPT software

## Inventory



PC Hardware  
Inventory



Software audit  
and license  
management



Network scan



Collected data  
processing

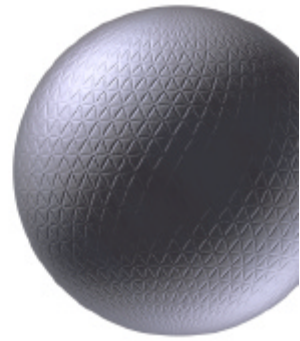
# Simple Powerful Efficient !

**Network Audit and**  
**Computer Inventory**  
**Within Minutes**

# SYNEXSYS®

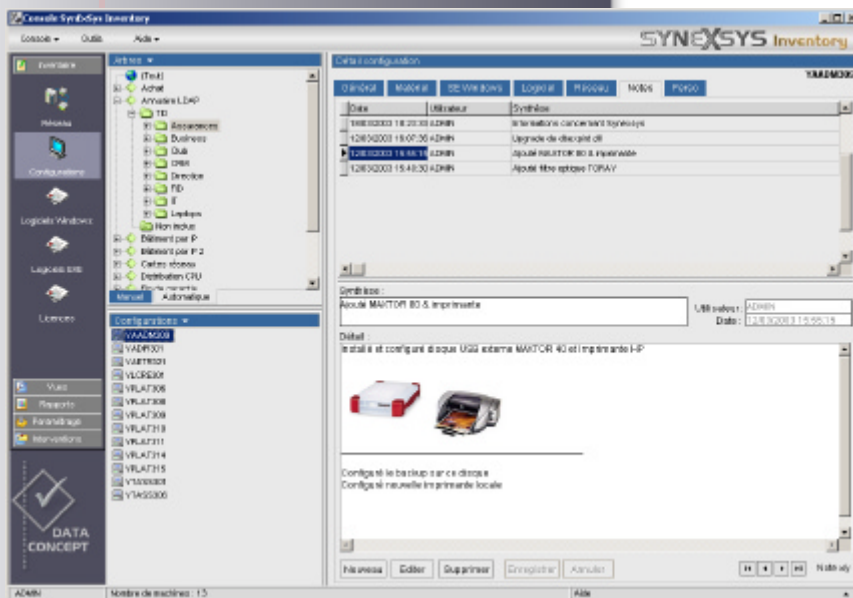
DATA CONCEPT software

## Inventory



### Summary

**Synexsys Inventory (SXS<sub>i</sub>) is a simple and powerful IT asset tracking solution able to provide an unparalleled image of collected IT equipment.**



**Ease of use and efficiency** are the main features of Synexsys Inventory.

Only a few minutes after the initial installation, your collecting agents are ready to be deployed enterprisewide automatically.

Within one hour, dozens of PCs will be scanned in minute detail and their extensive HW/SW inventory will be uploaded into the SXS<sub>i</sub> database.

Working in the SXS<sub>i</sub> Console with the collected information is child's play and doesn't require detailed technical knowledge.

**Synexsys Inventory** is the result of more than ten years of practical experience in the field.

Unlike many other inventory tracking systems, SXS<sub>i</sub> is based on the needs of nearly 200 companies (all sizes & industry types).

In addition to its powerful native features, Synexsys Inventory has many practical tools especially developed to enable daily tasks optimization.

SXS<sub>i</sub> provides an unlimited number of custom fields to permanently store any kind of additional data. Custom configurations can be created in order to manage other kinds of equipment such as mobiles, fax, copiers, etc.

**Whether you are a System Administrator, a Support Technician or a Purchase Officer, Synexsys Inventory will become your common IT Asset Reference.**

Synexsys Inventory automatically collects the technical data of each IT asset as well as the information provided by their manufacturers.

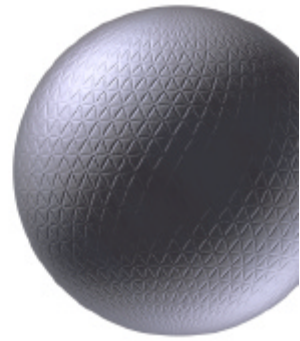
You can manually add custom information to complete collected data. You can even create new configurations from scratch.

Whatever the question in regard to IT assets, you'll definitely find the answer with Synexsys Inventory.

# SYNEXSYS®

DATA CONCEPT software

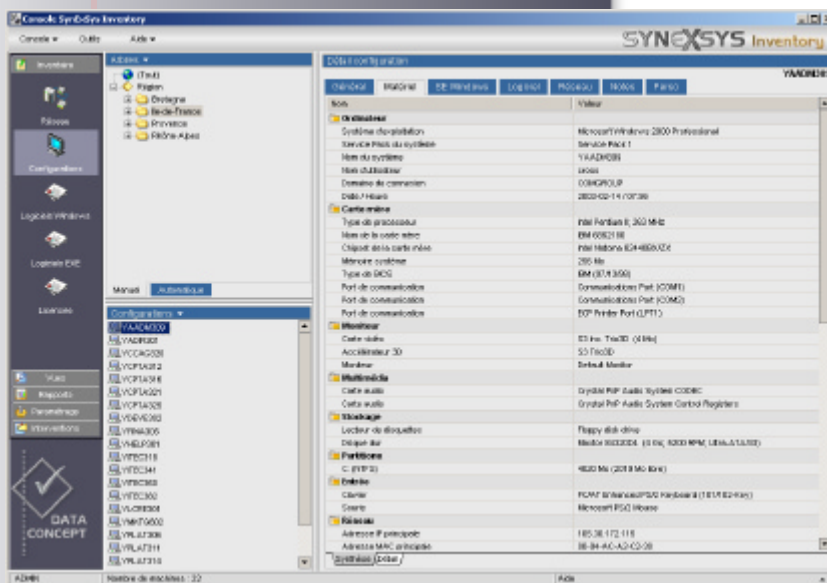
## Inventory



PC Hardware Inventory

Synexsys Inventory collects all available information by performing a comprehensive hardware inventory on each detected PC.

According to their needs, users can chose between summary or detailed working mode.



There's no compromise for SXSi when it comes to collecting the inventory of a computer.

In a few seconds, the Synexsys Inventory agent achieves a true radiography of the IT equipment.

It sends the collected information to a database easily accessible from the SXSi console and from the WEB reports.

There's no other inventory system on the market that is as precise and comprehensive as SXSi is.

**Optimizing IT Asset Management** entails a high level of data availability. Appropriate classification of technical and administrative information is an important key to achieving success.

By collecting very precise technical data dynamically, Synexsys Inventory provides up-to-date and reliable information at any time.

Administrative information can be added manually in specific user created fields.

IT Assets classification is provided by *intelligent treeviews*. An exclusive and powerful feature of Synexsys Inventory that will simply leave the chaos behind within a few seconds !

Basic information collected by Synexsys Inventory	
PC	Manufacturer, model, serial number
CPU	Brand, type, speed, cache type and size
Storage	Physical storage devices, type, size, etc.
Disks	Logical drives, size, space available, NTFS, FAT
Monitor	Manufacturer, model, serial number, size, etc.
RAM	Tot. RAM, type, size, RAM by slot, slots available
Video	Brand, RAM, resolution, installed driver
Network	Card brand, MAC Address, last IP, subnet mask
Etc.	...

# SYNEXSYS®

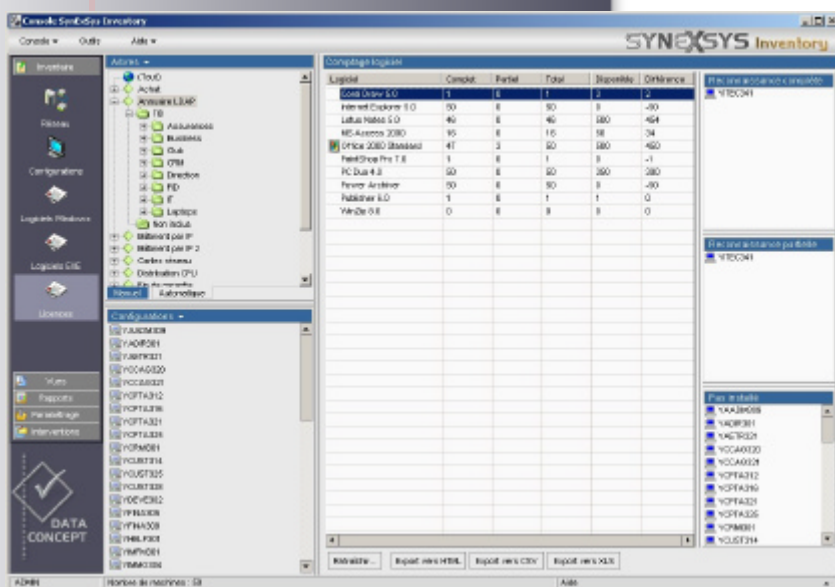
DATA CONCEPT software

## Inventory



Software audit  
and license  
management

In order to provide the most accurate information, Synexsys Inventory is able to scan every single file and to extract unlimited data from the Windows Registry or from INI file sections



Only exhaustiveness guarantees control over IT equipment !

Many well-known inventory tools base their software detection on partial information. SXSi on the contrary, collects all available information concerning software and enables the management of any application, independently of their distribution processes.

Standard installation, disk cloning, installation scripts and automatic software distribution are different contexts of software deployment. Very often, software recognition rules are "context sensitive" too.

Therefore, only an advanced system like SXSi will be able to detect all applications and manage their licenses in any situation.

When it comes to software and license management, SXSi goes far beyond its competitors.

The SXSi engine efficiently records all applications installed on a PC. Its sophisticated license management system tracks suites and stand-alone programs regardless of how they've been installed.

Some programs don't use .EXE files. This isn't a problem for SXSi. Even if you had only a single .GIF to identify an application, SXSi will manage it.

Furthermore, since you can associate tracers to software recognition rules, you can also easily detect pirated software.

### Basic information collected by Synexsys Inventory

EXE	Publisher, name, version, language, size, path
DLL	Publisher, name, version, language, size, path
OS	Name, version, language, SP, system folders
**	Name, size, path, date, etc.
**	Top 10 of extension by volume
**	Top 10 of extension by number of files
Windows	Windows recorded programs
Registry	Specific Registry keys values
INI	Section keys values from specific INI files



# SYNEXSYS®

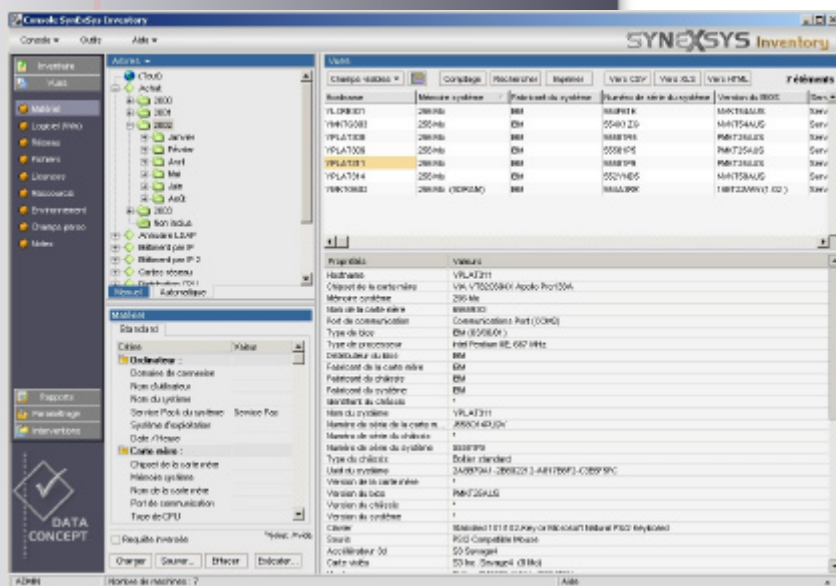
DATA CONCEPT software

## Inventory



Collected data  
processing

The Synexsys Inventory Console offers several advanced data processing tools and provides you with easy access to the IT Asset Inventory.



The purpose of an inventory tool is to allow you to work with collected data simply and efficiently.

What's the purpose of inventories, no matter how accurate, if you can't analyse their results ?

To be able to answer a wide range of needs, SXSi provides you with a large number of pre-defined views, queries and reporting tools.

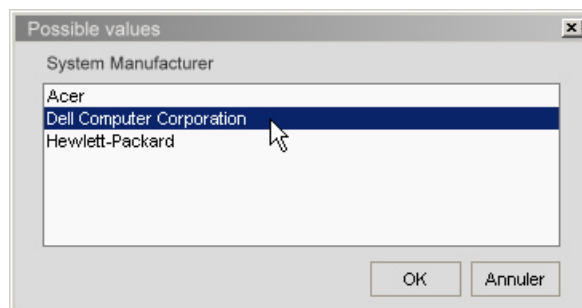
Collected data may be processed within the Console it-self or from a web page using Synexsys WEBReports. Inventory results can also be exported in various formats.

Synexsys Inventory includes a wide range of data processing tools.

Dashboards, detailed datasheets, statistic charts, and above all, an efficient QBE (query-by-example) module, allowing you to execute simple or complex queries on any inventoried data.

Queries results can be sorted, grouped and filtered. You can decide the fields you want to display and those you want to hide.

A simple click and your results will be published as a web page with the formatting options you set.

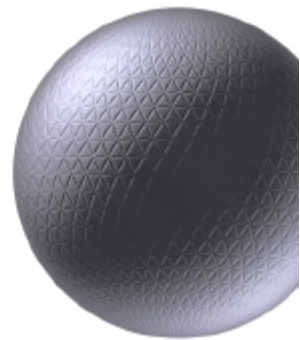


Stop losing your time. Double-click on any search field and you'll get all possible values for this field. No need to know the correct syntax in advance, no risk of manually typing wrong values !

# SYNEXSYS®

DATA CONCEPT software

## Inventory



Collected data  
processing

Whether you chose the **SXSi Console** or the **WEBReports**, you'll always find the most up-to-date information about your IT systems thanks to **Synexsys Inventory**

Synexsys Inventory reporting module offers very valuable professional outputs to help IT Managers to achieve their objectives.

When you need to get the whole company IT picture to be able to take the right decisions, you need a little bit more than a simple listing. The answer is named "Synexsys Reporting". A powerful reporting tool allowing output customization.

Should you need to display a list of your assets grouped by Service or to emphasize through a chart, the distribution of your PCs by CPU, Synexsys Reporting will always be the first choice when it comes to generating professional reports.

### Publish your inventory on the intranet with Synexsys Reporting

Synexsys Reporting is the stand-alone reporting tool that is included in every SXSi standard package. Synexsys Reporting can be used independently or from within the SXSi Console.

Reports may be batched and sent to the right person automatically on a scheduled basis.

Synexsys WEBReports may be integrated without coding to any internet page. As all the information necessary to build on-line queries is contained in the reports themselves, HTML query pages are built automatically.

**SYNEXSYS**  
Inventory

**Hardware**  
Date : 27/03/2003 17:58:51  
User : ADMIN

Type de processeur	Fabricant du système	Numéro de série du système	Moniteur
Intel Pentium 4, 1800 MHz (4 x 400)	IBM	5501GRX	IBM 5511 T54H (55-FK903)
Intel Pentium 4, 1800 MHz (4 x 400)	IBM	5501GRZ	IBM 5511 T54H (55-FK940)
Intel Pentium 4, 1800 MHz (4 x 400)	IBM	5501GTX	Philips 107E (107E2) (HD 000565)
Intel Pentium 4, 1800 MHz (4 x 400)	IBM	5501GTZ	IBM 5511 T54H (55-T5615)
Mobile Intel Pentium III, 900 MHz (3 x 100)	IBM	553Z1P0	IBM ThinkPad 1024x768 TFT LCD (90516643006)
Mobile Intel Pentium III, 900 MHz (3 x 100)	IBM	554A3PR	IBM ThinkPad 1024x768 TFT LCD (90516643006)
Intel Pentium III, 667 MHz	IBM	55581P5	Philips 109MB (OM2300) (HD 000565)
Intel Pentium III, 667 MHz	IBM	55581P7	Philips 107E (107E2) (HD 004962)
Intel Pentium III, 667 MHz	IBM	55581P9	Philips CM1200 (15A) (9054781)
Intel Pentium III, 667 MHz	IBM	55581R0	Philips CM1200 (15A) (9054501)
Intel Pentium III, 667 MHz	IBM	55581R5	Philips 109MB (OM2300) (HD 000562)
Intel Pentium III, 733 MHz (5.5 x 133)	IBM	555521B	Fujitsu Siemens Scalco CTM010 (VBM113058)

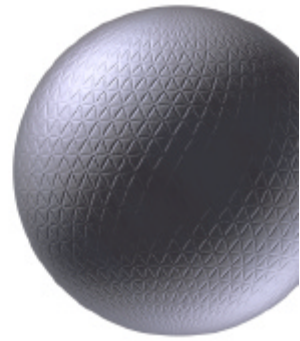
12 lignes

Powered by SYNEXSYS Inventory  
[www.synexsys.com](http://www.synexsys.com)

# SYNEXSYS®

DATA CONCEPT software

## Inventory



### Other features

**Dynamic view of the network** The main window of Synexsys Inventory allows you to see the network neighborhood as a windows explorer would. In this view, PCs are represented by different icons according to their status.

**Automatic classification structures** Automatic treeviews of SXSi are generated on demand, on the basis of collected data or manually added information. Treeviews allow you to organize IT and non-IT assets practically, according to their technical or administrative characteristics.

**Intelligent treeviews** It is possible to associate an item to any node in any classification tree. For instance, to a service in the organigram treeview, to a site in the location tree, to a brand in the manufacturer tree, to a month in the warranty tree, etc. The treeview target is to allow a practical or functional visualization of managed assets

**Software identification** Synexsys Inventory allows a precise customization of the criteria that permits the identification of a software or a suite of software. By doing so, SXSi guarantees a coherent result in any case.

**Unlimited custom fields** Thanks to custom fields, Synexsys Inventory allows you to add any kind of information to the collected data. For instance : purchase date, supplier, price, end of warranty date, belonging to a service, a location, a user, etc. Each field is totally customizable, (pick list, input mask, data type, mandatory field, etc.), which gives you excellent control of the input.

**Manual input** SXSi allows manual generation of any kind of equipment, (fax, copiers, phones, beamers, etc.), avoiding the need to manage those items in other databases.

**Windows registry and INI files analysis** Synexsys Inventory is able to collect an unlimited number of values from the Windows registry or from INI sections.

**Event follow-up** Unlimited number of horodated and auto signed notes can be associated to each equipment ensuring the follow-up of interventions and moves, for instance.

**Customizable interface** Synexsys Inventory offers great flexibility by allowing customization and specific protection. By doing so, SXSi gives a practical answer to users having different management needs, (system administrator, network technician, user support technician, purchase officer, accountant, etc.)

**Original query system** SXSi has a built-in query system allowing users to filter the information that will appear in SXSi reports. You just need to point anywhere in a treeview or directly on a PC or on a group of selected PCs and activate the desired filter or create a new filter online.

**Dynamic views** SXSi offers a number of views where assets' information are shown graphically. The views emphasize the distribution of IT equipment according to their features.

**Standard and WEB reporting** Synexsys Inventory offers a great number of ready-made charts and reports. Each of these outputs may be visualized within the application itself, exported to several formats, (PDF, XLS, HTML, CSV, etc.), or published on the WEB. For those who need to re-process raw data and possibly import it into other systems, data can be exported to flat files as TXT or CSV. Each report can also be accessed and run through a standard web browser.

**Unlimited volume of data** Synexsys is a reliable application and easily supports several GB of data. SXSi records collected information in databases like Firebird (no license, no client), Oracle or SQL Server.

**Compliance** Synexsys Inventory works in the following environment. OS : Win95, Win98, WinMe, WinNT, Win2000, WinXP. Network : Microsoft (NT, 2000, XP), Novell Netware xx and other TCP/IP networks

